

CASE STUDY

Power Line Crossing - Glasgow

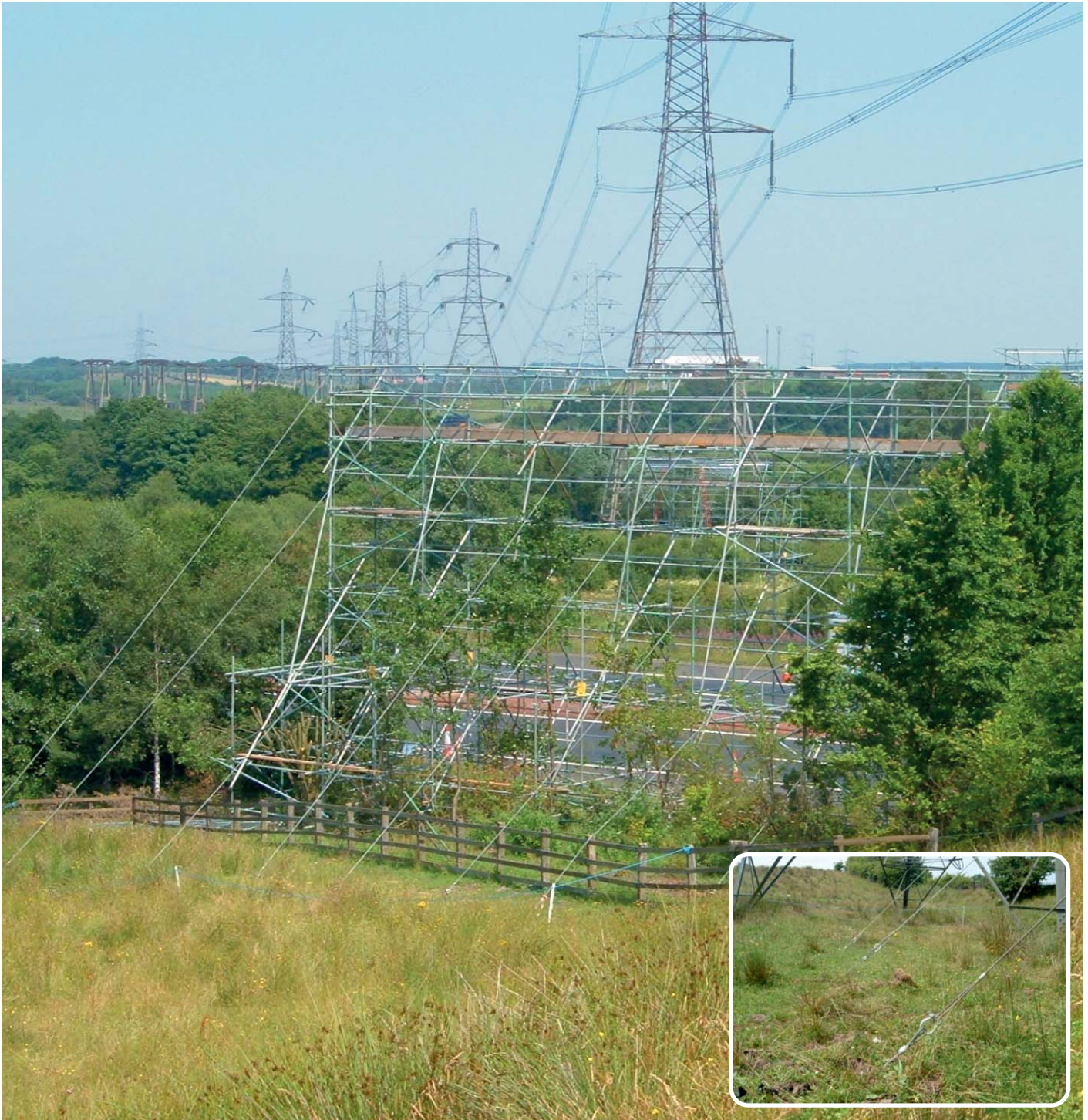


Project Specification

To protect the vehicles travelling along this section of the busy M73 motorway while essential maintenance and replacement works were carried out to the overhead power lines a scaffolding structure carrying a safety net was erected.

Solution

The scaffolding towers were erected in the field area beyond the hard shoulder of both carriageways. To provide support and prevent overturning anchors were installed and secured to the structures.



PDEA®, ARG5® and ARVS® are Registered Trademarks of Platipus Anchors.
Platipus Anchors technology is protected by International Patents, Trademarks and Registered Copyright.